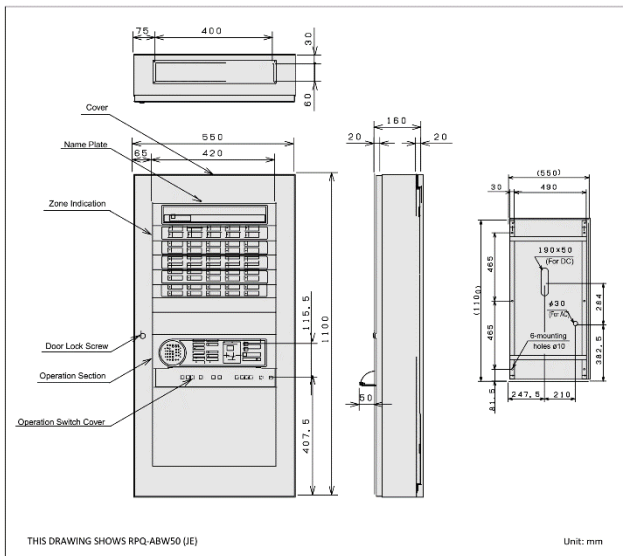


P-1 TYPE FIRE ALARM CONTROL PANEL: RPQ-ABW (30, 40, 50) (JE)



DIMENSION



STANDARD FEATURES

- Versatile zone configuration to suit various requirement
- Self-diagnosis function
- Time delay function
- Various test functions
- Built-in microphone hand-free intercom
- Built-in telephone jack

		P-1 Type Fire Alarm Control Panel (Time Delay Type)			
Product code		RPQ-ABW□(JE)			
Number of zone		30	40	50	
Main power		AC220V 50/60Hz			
Transformer rating		160VA	190VA		
Battery capacity (Nickel cadmium battery)		DC24V, 0.6Ah	DC24V, 0.9Ah		
Power consumption	Monitoring (max.)	67VA	89VA		
	Operating (max.)	128VA	157VA		
Detector circuit voltage		24V (nominal)			
Number of devices connected (Typical model names)	Smoke detector	Max. 30 units/zone (17 units/zone in average of all zones)			
	SPC-ET (Beam detector)	5 units/zone (Emitter separate power supply), 2 sets/zone			
	Heat detector	No limit (contact type)			
	Local sounder devise	8mA bell	50 units (DC24V, 400mA)	62 units (DC24V, 500mA)	75 units (DC24V, 600mA)
		13.5mA bell	29 units (DC24V, 400mA)	37 units (DC24V, 500mA)	44 units (DC24V, 600mA)
	Indication lamp	9mA LED	93 units (DC24V, 840mA)	116 units (DC24V, 1.050A)	140 units (DC24V, 1.26A)
		19mA LED	44 units (DC24V, 840mA)	55 units (DC24V, 1.050A)	66 units (DC24V, 1.26A)
Repeater panel	1 unit (Model: PEX-□H Type), (DC24V, 125mA)				
Typical delay time		Typical delay time 50s (Heat: Within 20 s, Smoke: Within 50 s)			
Delay system		Per-zone Temporary reset system			
Main alarm		Speaker (DC15V, 80mA)			
External signal transfer	General fire alarm signal transfer	1c x 1 point (DC30V-1A)			
	Fire confirmation signal transfer	1a x 1 point (DC30V-1A)			
	Manual call point signal transfer	1a x 1 point (DC30V-1A)			
	Cut off signal transfer	1c x 1 point (DC30V-1A)			
	Zone signal transfer	Open-collector output x number of zones (DC30V-1A)			
Multi signal transfer	1c x 2 points, 1a x 2 points (DC30V-1A)				
Indication input		1a x 3 points (For input voltage) (DC 10V to 33V or AC 10V to 33V)			
External wire resistance		Detector line (L-C) 50Ω or less			
End of line resistor		10kΩ, 1W			
Operating temperature range		0°C to 40°C			
Material		Main body and door: Steel plate, Thickness 1.6mm, Baking finish Panel portion: Self-extinguishing resin, Thickness 2.5mm			
Color		Main body and door: Munsell value 2.5Y9/1 (semi-gloss) approximate color Panel portion: Munsell value 5Y6/0.5 approximate color			
Dimension	30 - 40L (Zones)	(W)550 x (H)850 x (D)130 (mm)			
	50L (Zones)	(W)550 x (H)1100 x (D)160 (mm)			
Weight		25kg	30kg		
Accessories		Battery, Instruction Manual, Installation Manual, End of line resistor 10kΩ (Equivalent to the number of zones), Fuse clip and Telephone handset (for panel)			
Spare part		Fuse: 3 pcs. Each			
Country of origin		Japan			

Specifications subject to change without notice