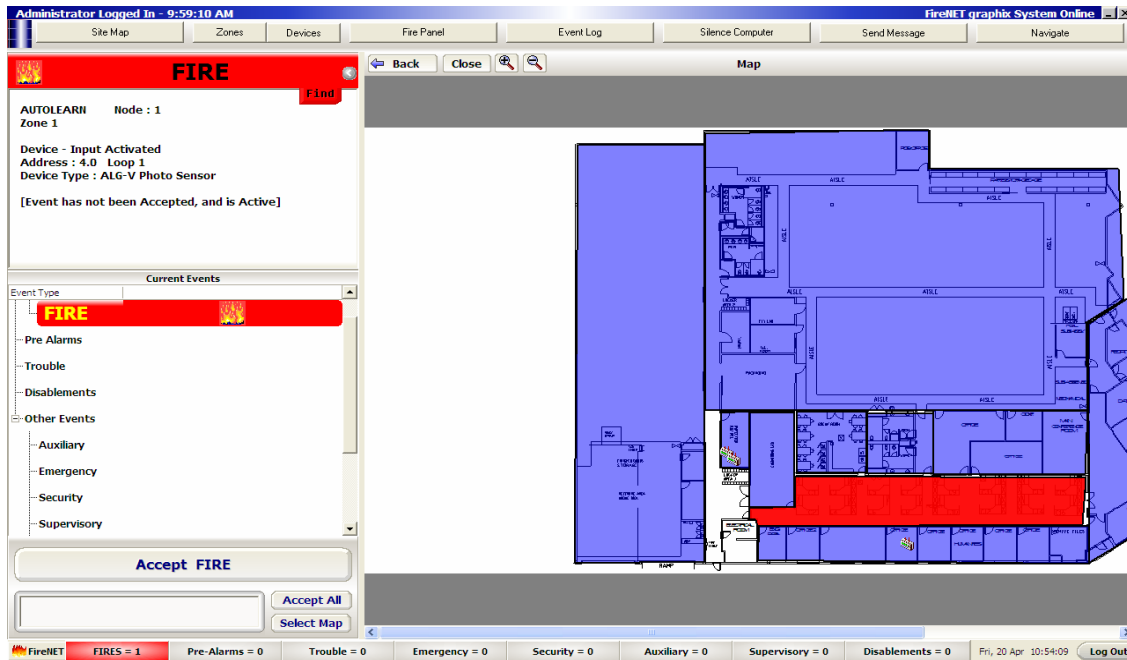


## FireNET GRAPHIX SOFTWARE PACKAGE



### STANDARD FEATURES

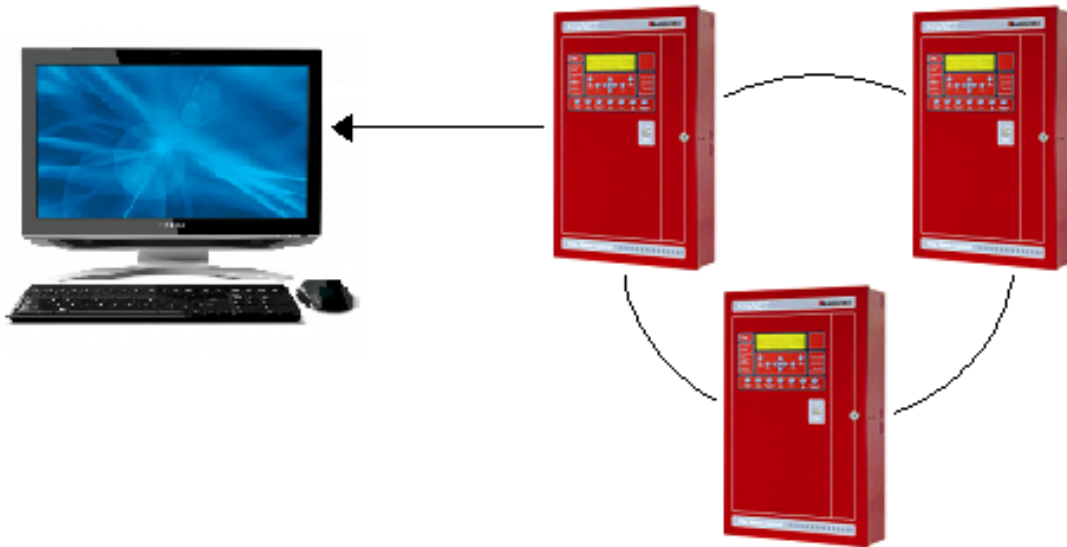
- Choice of text, graphic, and event list display when event occurs
- Versatile event analysis
- Total history archive
- Easy to program
- Secure System
- Cost effective compared to other systems
- Simple to use
- Unlimited map linking
- Display and control for multiple panels
- Event history can be viewed, filtered and exported to text or HTML documents

### PRODUCT OVERVIEW

- FireNET & FireNET Plus control panels can send data to, and be controlled by, the FireNET *graphix* system providing a single point of coordination for all alarms.
- The powerful 32 bit program features a standard Windows® look and feel.
- The system has a wide range of configurability options, and can utilize maps, photographs, audio or a combination of all if required.
- User profiles allow the system manager to control the access level of each individual user.
- A comprehensive history logging and reporting system allows analysis of events and trends to be identified to reduce unwanted alarms.
- Easy to program and simple to use, FireNET *graphix* provides a cost effective solution for fire alarm management at many levels.

*Specifications subject to change without notice.*

*Continued on back.*



## SYSTEM REQUIREMENTS

- CD ROM Drive
- 1Ghz Pentium or equivalent processor
- Windows XP
- 256MB RAM memory (recommended 1GB)
- 10GB Hard Drive (20GB recommended if many maps are to be used)
- 32MB or better graphics card
- Any sound card
- Monitor must support 1024 x 768 graphics driver
- Mouse
- Printer (optional)
- One RS232 serial or USB port per network

## HOW TO ORDER FireNET GRAPHIX

Each panel and network annunciator is considered a "Node". Order the package that corresponds with the number of Nodes in your system.

\* Example;

5 FireNET Panels + 1 FireNET  
Network Annunciator = 6 Nodes,  
order GUS5-8.

\* To add one workstation;

order GUS5-8 + GUSR2001

## FEATURES

- Ability to import Loop Explorer configuration file to FireNET graphix file
- Drag and drop from device tree to maps
- Real time Graph of device analog values
- Connectivity of additional workstations over network. (Number of additional workstations depends on license)
- FireNET graphix systems available in the following packages;
  - 1 to 4 node package (GUS1-4)
  - 5 to 8 node package (GUS5-8)
  - 9 to 16 node package (GUS9-16)
  - 17 to 32 node package (GUS17-32)
  - 33+ node package (GUS33+)
- System upgrade packages available, call for more information.
- To add additional workstations, use one of the following part numbers;
  - 1 workstation (GUSR2001)
  - 2 ~ 4 workstations (GUSR2004)
  - 5 ~ 8 workstations (GUSR2008)